

**FUGIT Vanity**  
**3-5012-xx**

oxygen

FIXTURE TYPE \_\_\_\_\_

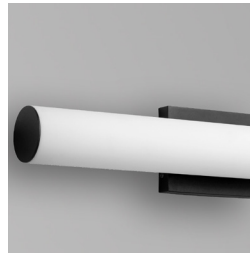
LOCATION \_\_\_\_\_

PROJECT \_\_\_\_\_

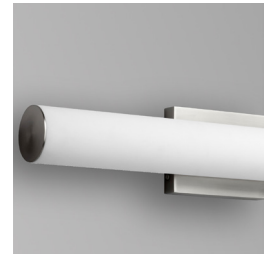
DATE \_\_\_\_\_



**-20 Polished Nickel**



**-15 Black**



**-24 Satin Nickel**

- LIGHT SOURCE** 2 x 9W, 3000K, CRI 90
- LUMINAIRE POWER** 23W at 120V
- RATED LIFE** 60000 hr RL
- LUMEN OUTPUT** Delivered: 1504 lm (LM-79)
- INPUT VOLTAGE** 120V, 60Hz
- DRIVER OUTPUT** 700mA, 30W max
- DIMMING** TRIAC Dimming
- CONSTRUCTION** Plated Steel and Acrylic
- DIFFUSER** - Matte White Acrylic
- FINISHES** Black (-15), Polished Nickel (-20), Satin Nickel (-24)
- MOUNTING** 4" Octogonal J-Box\*  
 4"x4" Square J-Box\* with single device mud ring  
 \*Deep J-Box (Required to house driver)
- STANDARDS** ETL Dry/Damp listed, ADA Compliant, Conforms to UL STD 1598,  
 Certified CAN/CSA, STD C22.2 No 250.0.



**DIMENSIONS**

- W: 23.25"**
- H: 4.50"**
- Ext: 3.125"**
- M.C: 2.25" From Top of Fixture**

Order example for standard fixture:  
**3-5012-xx** (x-Voltage - xxx-Sequence # - xx-Finish)

